

# Manitoba Junior Honour Band

## Flute/Piccolo Scales

Piccolo players must also audition on flute on the same tape/cd.

Flute: 2 octave E $\flat$  chromatic (slurred) & 2 octave F major with 1 octave arpeggio (tongued)

Piccolo: Perform the above scales on flute and a 2 octave E $\flat$  chromatic (slurred) on piccolo.

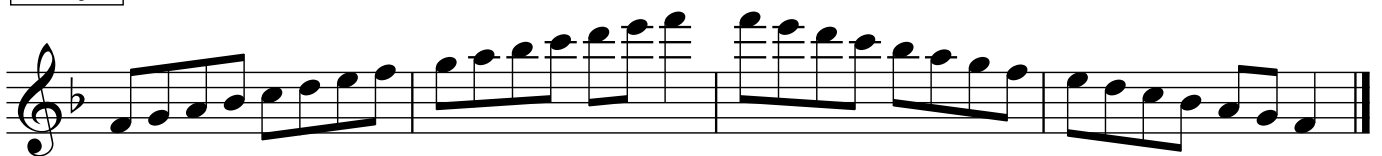
$\text{♩} = 104$  or faster

E $\flat$  chromatic



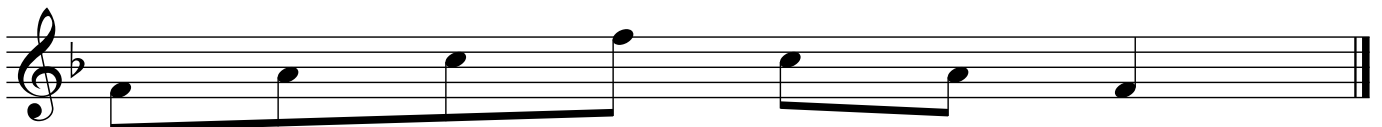
Musical notation for the E $\flat$  chromatic scale. It consists of two staves of music in 4/4 time. The first staff shows the scale ascending from E $\flat$  to B $\flat$  over two octaves, slurred. The second staff shows the scale descending from B $\flat$  to E $\flat$  over two octaves, also slurred.

F major



Musical notation for the F major scale. It consists of one staff of music in 4/4 time. The scale is shown ascending and then descending over two octaves, starting from F.

F major arpeggio



Musical notation for the F major arpeggio. It consists of one staff of music in 4/4 time. The arpeggio is shown ascending and then descending over one octave, starting from F.

# Manitoba Junior Honour Band

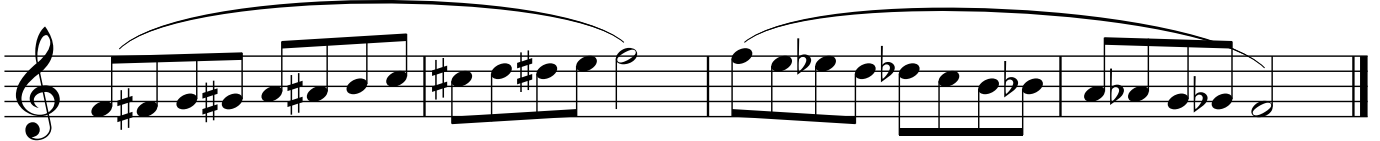
## Oboe Scales

1 octave F chromatic (slurred)

1 octave A $\flat$  major with arpeggio (tongued)

$\text{♩} = 104$  or faster

F chromatic



Musical notation for the F chromatic scale on a treble clef staff. The scale consists of two phrases: an ascending scale from F4 to F5 and a descending scale from F5 to F4. The notes are slurred together.

A $\flat$  major

A $\flat$  major arpeggio



Musical notation for the A $\flat$  major scale and arpeggio on a treble clef staff. The first phrase is a scale from A $\flat$ 4 to A $\flat$ 5, and the second phrase is an arpeggio from A $\flat$ 5 down to A $\flat$ 4.

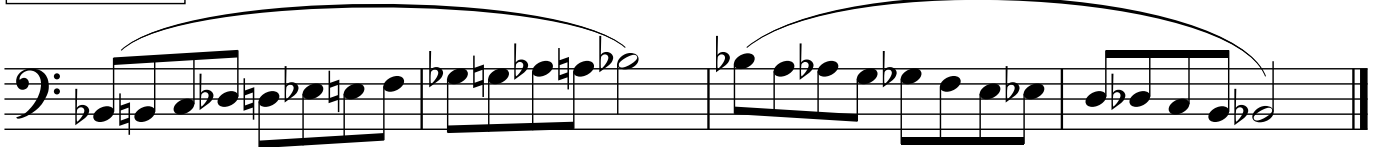
## Bassoon Scales

1 octave B $\flat$  chromatic (slurred)

1 octave E $\flat$  major with arpeggio (tongued)

$\text{♩} = 104$  or faster

B $\flat$  chromatic



Musical notation for the B $\flat$  chromatic scale on a bass clef staff. The scale consists of two phrases: an ascending scale from B $\flat$ 3 to B $\flat$ 4 and a descending scale from B $\flat$ 4 to B $\flat$ 3. The notes are slurred together.

E $\flat$  major

E $\flat$  major arpeggio



Musical notation for the E $\flat$  major scale and arpeggio on a bass clef staff. The first phrase is a scale from E $\flat$ 3 to E $\flat$ 4, and the second phrase is an arpeggio from E $\flat$ 4 down to E $\flat$ 3.

# Manitoba Junior Honour Band

## Clarinet Scales

♩=104 or faster

2 octave F chromatic (slurred)

2 octave D major with arpeggio (tongued)

F chromatic

Musical notation for Clarinet Scales. The first section shows a 2-octave F chromatic scale (slurred) on a treble clef staff, spanning from F4 to F6. The second section shows a 2-octave D major scale with arpeggio (tongued) on a treble clef staff, spanning from D4 to D6.

D major

Musical notation for Clarinet Scales: D major. A treble clef staff showing a 2-octave D major scale (D4 to D6) with a key signature of one sharp (F#).

D major arpeggio

Musical notation for Clarinet Scales: D major arpeggio. A treble clef staff showing a 2-octave D major arpeggio (D4 to D6) with a key signature of one sharp (F#).

## Bass Clarinet Scales

♩=104 or faster

2 octave F chromatic (slurred)

1 octave B $\flat$  major with arpeggio (tongued)

F chromatic

Musical notation for Bass Clarinet Scales. The first section shows a 2-octave F chromatic scale (slurred) on a treble clef staff, spanning from F4 to F6. The second section shows a 1-octave B $\flat$  major scale with arpeggio (tongued) on a treble clef staff, spanning from B $\flat$ 4 to B $\flat$ 5.

B $\flat$  major

B $\flat$  major arpeggio

Musical notation for Bass Clarinet Scales: B $\flat$  major and B $\flat$  major arpeggio. A treble clef staff showing a 1-octave B $\flat$  major scale (B $\flat$ 4 to B $\flat$ 5) with a key signature of two flats (B $\flat$ , E $\flat$ ), followed by a B $\flat$  major arpeggio.

# Manitoba Junior Honour Band

## Saxophone Scales

2 octave C chromatic (slurred)

1 OR 2 octave F major with 1 octave arpeggio (tongued)

$\text{♩} = 104$  or faster

C chromatic

Two staves of musical notation for a C chromatic scale. The first staff shows the ascending scale from C4 to C6, and the second staff shows the descending scale from C6 to C4. The notes are slurred together, and the key signature has one sharp (F#).

F major - 2 octaves

Two staves of musical notation for an F major scale, 2 octaves. The first staff shows the ascending scale from F4 to F6, and the second staff shows the descending scale from F6 to F4. The notes are tongued, and the key signature has one flat (Bb).

F major - 1 octave

One staff of musical notation for an F major scale, 1 octave. The notes are tongued, and the key signature has one flat (Bb).

F major arpeggio

One staff of musical notation for an F major arpeggio. The notes are tongued, and the key signature has one flat (Bb).

# Manitoba Junior Honour Band

## Trumpet/Euphonium TC Scales

2 octave G chromatic (slurred)

1 OR 2 octave B $\flat$  major with 1 octave arpeggio (tongued)

$\text{♩} = 104$  or faster

G chromatic

Two staves of musical notation for a G chromatic scale. The first staff shows the scale ascending from G4 to G5, and the second staff shows it descending from G5 to G4. The notes are slurred together. The key signature has one flat (B $\flat$  major).

B $\flat$  major - 2 octaves

Two staves of musical notation for a B $\flat$  major scale, 2 octaves. The first staff shows the scale ascending from B $\flat$ 4 to B $\flat$ 5, and the second staff shows it descending from B $\flat$ 5 to B $\flat$ 4. The notes are tongued. The key signature has two flats (B $\flat$  major).

B $\flat$  major - 1 octave

One staff of musical notation for a B $\flat$  major scale, 1 octave. The notes are tongued. The key signature has two flats (B $\flat$  major).

B $\flat$  major arpeggio

One staff of musical notation for a B $\flat$  major arpeggio. The notes are tongued. The key signature has two flats (B $\flat$  major).

# Manitoba Junior Honour Band

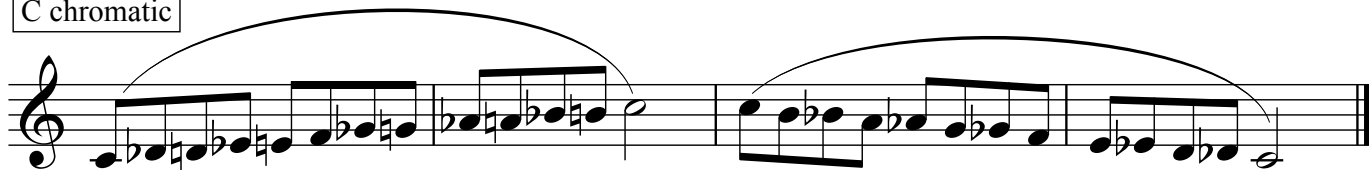
## French Horn Scales

1 octave C chromatic (slurred)

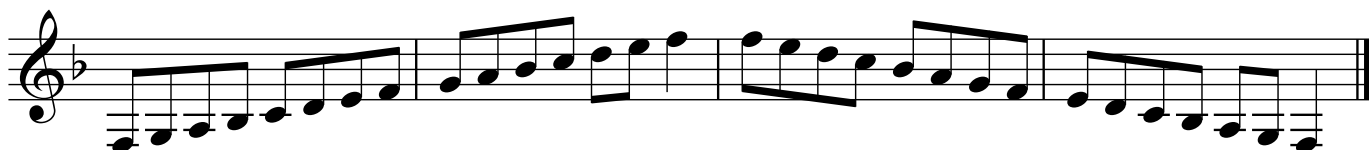
1 OR 2 octave F major with 1 octave arpeggio (tongued)

$\text{♩} = 104$  or faster

C chromatic



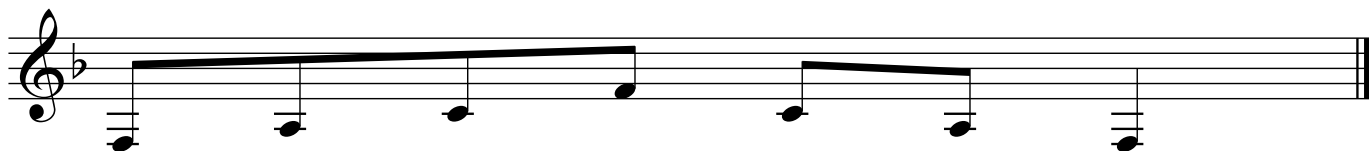
F major - 2 octaves



F major - 1 octave



F major arpeggio



# Manitoba Junior Honour Band

## Trombone/Euphonium BC/String Bass Scales

2 octave F chromatic (slurred)

1 OR 2 octave A $\flat$  major with 1 octave arpeggio (tongued)

$\text{♩} = 104$  or faster

F chromatic

Two staves of musical notation in bass clef, key signature of one flat (B $\flat$ ). The first staff shows the first two octaves of an F chromatic scale, starting on F $\flat$  (E) and ending on F. The second staff continues the scale from F to F $\flat$  (E) and ends with a whole note F. A large slur covers the entire two-octave chromatic run.

A $\flat$  major - 2 octaves

One staff of musical notation in bass clef, key signature of two flats (B $\flat$ , E $\flat$ ). It shows two octaves of an A $\flat$  major scale, starting on A $\flat$  and ending on A $\flat$ .

A $\flat$  major - 1 octave

A $\flat$  major arpeggio

One staff of musical notation in bass clef, key signature of two flats (B $\flat$ , E $\flat$ ). The first part shows one octave of an A $\flat$  major scale, starting on A $\flat$  and ending on A $\flat$ . The second part shows an A $\flat$  major arpeggio, starting on A $\flat$  and moving up to C $\flat$ , E $\flat$ , and A $\flat$ .

## Tuba Scales

1 octave E $\flat$  chromatic (slurred)

1 octave A $\flat$  major with arpeggio (tongued)

$\text{♩} = 104$  or faster

E $\flat$  chromatic

One staff of musical notation in bass clef, key signature of two flats (B $\flat$ , E $\flat$ ). It shows one octave of an E $\flat$  chromatic scale, starting on E $\flat$  and ending on E $\flat$ . A large slur covers the entire one-octave chromatic run.

A $\flat$  major

A $\flat$  major arpeggio

One staff of musical notation in bass clef, key signature of two flats (B $\flat$ , E $\flat$ ). The first part shows one octave of an A $\flat$  major scale, starting on A $\flat$  and ending on A $\flat$ . The second part shows an A $\flat$  major arpeggio, starting on A $\flat$  and moving up to C $\flat$ , E $\flat$ , and A $\flat$ .

