

Manitoba Junior Honour Band

Flute/Piccolo Scales

Piccolo players must also audition on flute on the same tape/cd.

Flute: 2 octave E \flat chromatic (slurred) & 2 octave F major with 1 octave arpeggio (tongued)

Piccolo: Perform the above scales on flute and a 2 octave E \flat chromatic (slurred) on piccolo.

$\text{♩} = 104$ or faster

E \flat chromatic



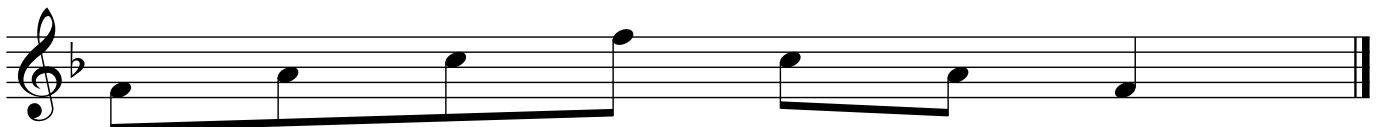
Musical notation for the E \flat chromatic scale. It consists of two staves of music in 4/4 time. The first staff shows the scale ascending from E \flat 4 to E \flat 6, and the second staff shows the scale descending from E \flat 6 to E \flat 4. The notes are slurred together. The key signature has one flat (B \flat), and the time signature is 4/4.

F major



Musical notation for the F major scale. It consists of two staves of music in 4/4 time. The first staff shows the scale ascending from F4 to F6, and the second staff shows the scale descending from F6 to F4. The notes are slurred together. The key signature has one flat (B \flat), and the time signature is 4/4.

F major arpeggio



Musical notation for the F major arpeggio. It consists of two staves of music in 4/4 time. The first staff shows the arpeggio ascending from F4 to F6, and the second staff shows the arpeggio descending from F6 to F4. The notes are slurred together. The key signature has one flat (B \flat), and the time signature is 4/4.

Manitoba Junior Honour Band

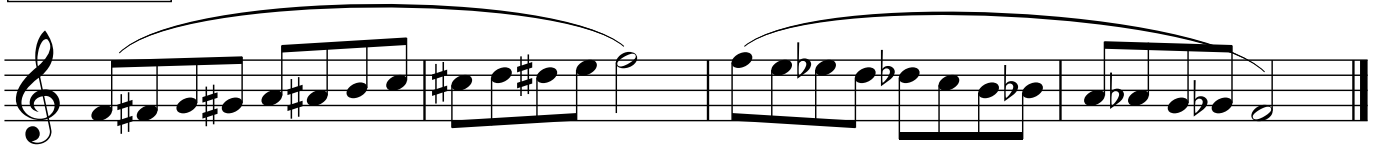
Oboe Scales

1 octave F chromatic (slurred)

1 octave A \flat major with arpeggio (tongued)

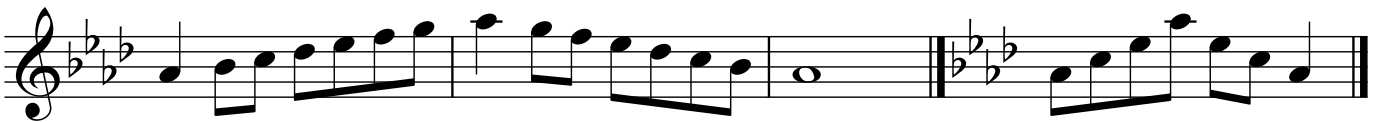
$\text{♩} = 104$ or faster

F chromatic



A \flat major

A \flat major arpeggio



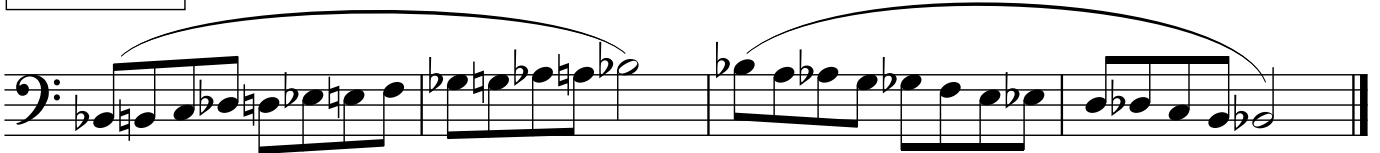
Bassoon Scales

1 octave B \flat chromatic (slurred)

1 octave E \flat major with arpeggio (tongued)

$\text{♩} = 104$ or faster

B \flat chromatic



E \flat major

E \flat major arpeggio



Manitoba Junior Honour Band

Clarinet Scales

♩=104 or faster

2 octave F chromatic (slurred)

2 octave D major with arpeggio (tongued)

F chromatic

Two staves of musical notation for Clarinet Scales. The first staff shows a 2-octave F chromatic scale (slurred), starting on F4 and ending on F6. The second staff shows a 2-octave D major scale with arpeggio (tongued), starting on D4 and ending on D6.

D major

Staff of musical notation for Clarinet Scales: D major scale, starting on D4 and ending on D6.

D major arpeggio

Staff of musical notation for Clarinet Scales: D major arpeggio, starting on D4 and ending on D6.

Bass Clarinet Scales

♩=104 or faster

2 octave F chromatic (slurred)

1 octave B \flat major with arpeggio (tongued)

F chromatic

Two staves of musical notation for Bass Clarinet Scales. The first staff shows a 2-octave F chromatic scale (slurred), starting on F3 and ending on F5. The second staff shows a 1-octave B \flat major scale with arpeggio (tongued), starting on B \flat 3 and ending on B \flat 4.

B \flat major

B \flat major arpeggio

Two staves of musical notation for Bass Clarinet Scales. The first staff shows a 1-octave B \flat major scale (tongued), starting on B \flat 3 and ending on B \flat 4. The second staff shows a 1-octave B \flat major arpeggio (tongued), starting on B \flat 3 and ending on B \flat 4.

Manitoba Junior Honour Band

Saxophone Scales

2 octave C chromatic (slurred)

1 OR 2 octave F major with 1 octave arpeggio (tongued)

$\text{♩} = 104$ or faster

C chromatic

Two staves of musical notation for a C chromatic scale. The first staff shows the ascending scale from C4 to C6, and the second staff shows the descending scale from C6 to C4. The notes are slurred together, and the key signature has one sharp (F#).

F major - 2 octaves

Two staves of musical notation for an F major scale, 2 octaves. The first staff shows the ascending scale from F4 to F6, and the second staff shows the descending scale from F6 to F4. The notes are tongued, and the key signature has one flat (Bb).

F major - 1 octave

One staff of musical notation for an F major scale, 1 octave. The notes are tongued, and the key signature has one flat (Bb).

F major arpeggio

One staff of musical notation for an F major arpeggio. The notes are F4, A4, C5, F5, A4, C5, F5, A4, C5, F4, and the key signature has one flat (Bb).

Manitoba Junior Honour Band

Trumpet/Euphonium TC Scales

2 octave G chromatic (slurred)

1 OR 2 octave B \flat major with 1 octave arpeggio (tongued)

$\text{♩} = 104$ or faster

G chromatic

Two staves of musical notation for a G chromatic scale. The first staff shows the scale ascending from G4 to G5, and the second staff shows it descending from G5 to G4. The notes are slurred together. The key signature has one flat (B \flat major).

B \flat major - 2 octaves

Two staves of musical notation for a B \flat major scale, 2 octaves. The first staff shows the scale ascending from B \flat 4 to B \flat 5, and the second staff shows it descending from B \flat 5 to B \flat 4. The notes are tongued. The key signature has two flats (B \flat major).

B \flat major - 1 octave

One staff of musical notation for a B \flat major scale, 1 octave. The notes are tongued. The key signature has two flats (B \flat major).

B \flat major arpeggio

One staff of musical notation for a B \flat major arpeggio. The notes are tongued. The key signature has two flats (B \flat major).

Manitoba Junior Honour Band

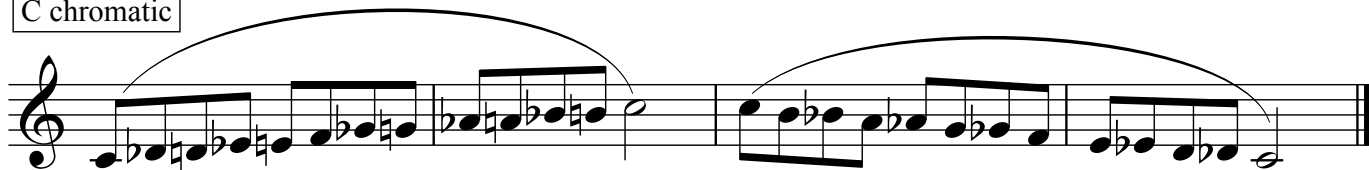
French Horn Scales

1 octave C chromatic (slurred)

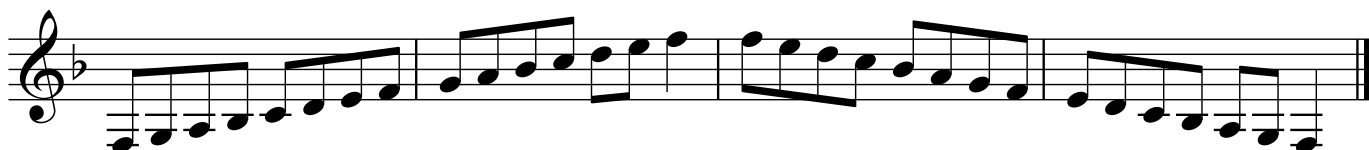
1 OR 2 octave F major with 1 octave arpeggio (tongued)

$\text{♩} = 104$ or faster

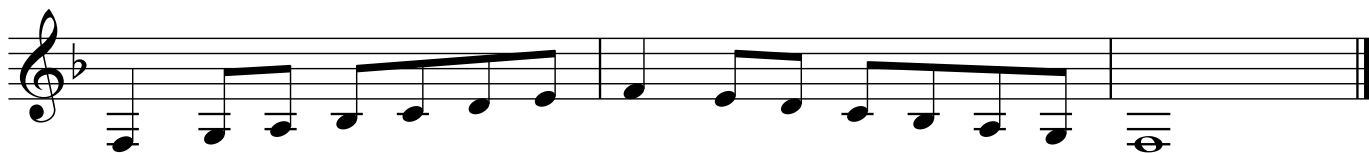
C chromatic



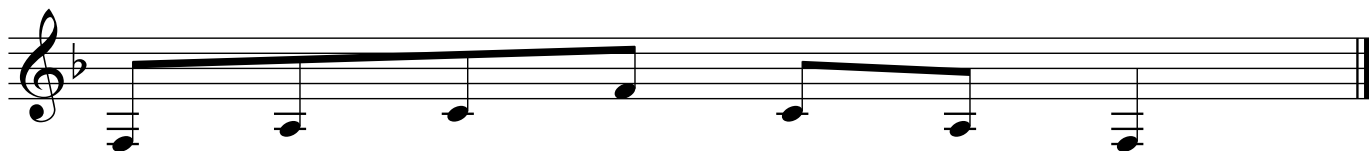
F major - 2 octaves



F major - 1 octave



F major arpeggio



Manitoba Junior Honour Band

Trombone/Euphonium BC/String Bass Scales

2 octave F chromatic (slurred)

1 OR 2 octave A \flat major with 1 octave arpeggio (tongued)

$\text{♩} = 104$ or faster

F chromatic

Two staves of musical notation in bass clef, 2/4 time. The first staff shows an ascending chromatic scale from F2 to F4. The second staff shows a descending chromatic scale from F4 to F2. The entire two-octave range is covered by a single slur.

A \flat major - 2 octaves

One staff of musical notation in bass clef, 2/4 time. It shows an ascending A \flat major scale from F2 to F4, followed by a descending A \flat major scale from F4 to F2.

A \flat major - 1 octave

A \flat major arpeggio

One staff of musical notation in bass clef, 2/4 time. The first part shows an ascending A \flat major scale from F3 to F4, followed by a descending A \flat major scale from F4 to F3. The second part shows an A \flat major arpeggio (F3, A \flat 3, C4, F4).

Tuba Scales

1 octave E \flat chromatic (slurred)

1 octave A \flat major with arpeggio (tongued)

$\text{♩} = 104$ or faster

E \flat chromatic

One staff of musical notation in bass clef, 2/4 time. It shows an ascending chromatic scale from E \flat 3 to E \flat 4, followed by a descending chromatic scale from E \flat 4 to E \flat 3. The entire one-octave range is covered by a single slur.

A \flat major

A \flat major arpeggio

One staff of musical notation in bass clef, 2/4 time. The first part shows an ascending A \flat major scale from F3 to F4, followed by a descending A \flat major scale from F4 to F3. The second part shows an A \flat major arpeggio (F3, A \flat 3, C4, F4).

Manitoba Junior Honour Band

Percussionists must play the required scales and etudes for snare drum and mallets.
Those who wish to be considered for timpani must also play a long roll (pp-ff-pp) on timpani.

Mallet Percussion Scales

2 octave A \flat chromatic (single strokes)

1 octave E \flat major (connected roll)

$\text{♩} = 104$ or faster

A \flat chromatic

Two staves of musical notation for the A \flat chromatic scale. The first staff shows the scale ascending from A \flat to G \flat in eighth notes. The second staff shows the scale descending from G \flat to A \flat in eighth notes. The key signature has two flats (B \flat and E \flat).

$\text{♩} = 72$

E \flat major - connected roll

One staff of musical notation for the E \flat major connected roll. The key signature has three flats (B \flat , E \flat , and A \flat). The notation consists of a series of chords (triads) connected together, starting from E \flat and moving through the major scale.